

Foodservice Equipment • Material Handling, Healthcare & Cleanroom Equipment • Retail Display

## 314 Series Sinks

*Deep-Drawn Coved Corner  
One-Compartment*



*one-compartment sink  
with double drainboards*

BOWL SIZES ACCOMMODATE



A WIDE RANGE OF POTS

Item #: \_\_\_\_\_  
Model #: \_\_\_\_\_  
Project #: \_\_\_\_\_  
SIS #: \_\_\_\_\_

Optional Accessories	Model #	Qty.
Stainless steel legs		
Stainless steel bullet feet		
Lever drains		
Faucets		
Sink covers		
Waste outlets		
Sink kits		



- Heavy gauge stainless steel construction — bowl, drainboards and backsplash are type 304.
- Deep-drawn seamless coved corner bowls.
- 14" (356mm) water level is standard.
- Swirl-away drainage.
- Legs welded adjacent to sink bowl for maximum weight support and stability.
- 10" (254mm) standard backsplash includes 1" (25mm) upturn and tile edge for easy installation and feathering to wall/splash surface.
- Adjustable non-corrosive bullet feet.
- Die-stamped creased drainboards for positive drainage.

### Sink Kits for 314 Series Sinks

Kits include **stainless steel crossbraced legs, stainless steel gussets and stainless steel feet** as listed below.

#### Kit A

description	add suffix
Includes crossbraced legs, gussets, feet, and T&S faucet*	"CLF"

#### Kit B

description	add suffix
Includes crossbraced legs, gussets, feet, T&S faucet*, and lever drain	"CLFD"

#### Kit C

description	add suffix
Includes crossbraced legs, gussets, feet, T&S faucet*, and lever drain with overflow	"CLFDO"

\* T&S faucet #313293

Spec sheets available for viewing, printing or downloading from our online literature library at [www.eaglegrp.com](http://www.eaglegrp.com)

## 314 Series Coved Corner One-Compartment Sinks

### NSF-approved installations:

All EAGLE sinks bearing the NSF Certification Mark are built in compliance with the National Sanitation Foundation Standard Number 2.

EAGLE is also listed to manufacture custom-built sinks in compliance with the National Sanitation Foundation Standard Number 2.

### Material:

**Sink Bowl** – Heavy gauge type 304 stainless steel.

**Top** – Drainboards, backsplash and rolled rims are heavy gauge type 304 stainless steel.

**Legs** – 1½" (41mm)-diameter heavy-gauge galvanized tubing with plated 12-gauge gussets and high-impact corrosion resistant fully adjustable bullet feet – crossbracing is 1" (25mm)-diameter heavy-gauge galvanized tubing.

*Optional stainless steel legs utilize 16/304 tubing.*

### Design and Construction Features:

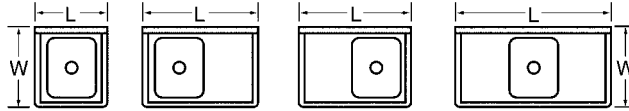
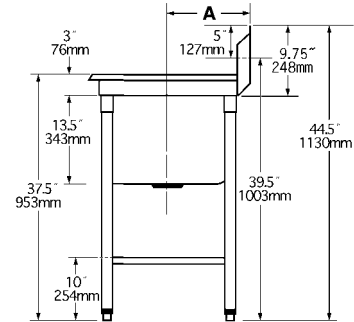
- Sink bowl has deep-drawn one-piece seamless construction using state-of-the-art hydraulic presses.
- Drainboards, when provided, are integrally welded.
- Sink bowl has a generous radius with a minimum dimension of 3" (76mm) and are rectangular for maximum capacity.
- Legs are welded adjacent to sink bowl, providing increased stability and maximum weight support where needed.
- Leg gussets welded to a die-cut heavy-gauge reinforcing plate.
- Entire assembly is fuse-welded and planished, providing a one-piece seamless sink unit.
- Welded areas are high-speed belt blended to match adjacent surfaces with continuity of satin finish.
- 10" (248mm)-high full length standard backsplash features 1" (25mm) upturn and tile edge for easy installation and feathering to wall/splash surface.
- All outside corners of sink assembly are bullnosed to provide safe, clean edges.
- 14" (356mm) water level — 17" (432mm) flood level.

### Mechanical:

- Water supply is ½" (13mm) IPS for hot and cold lines.
- Faucet holes are 1½" (29mm) punched on 8" (203mm) centers.
- Faucets are available as options.
- Basket-type waste drain included fits sink bowl's 3½" (89mm) opening and features 1½" (38mm) outlet.

Drain location for rough-in

bowl size in.	mm	Dimension A in.	mm
19" x 16"	483 x 406	13½"	343
19½" x 17½"	495 x 445	14"	365
24" x 18"	610 x 457	16"	422
22" x 22"	559 x 559	15"	381
24" x 24"	610 x 610	16"	406



bowl size width x length	# of drbds	drbd length		weight lbs. kg	overall size width x length		model #	
		in.	mm		in.	mm		
19" x 16" (483 x 406mm)	0	n/a		40	18.1	26" x 21½"	660 x 546	314-16-1
	1	18"	457	59	26.8	26" x 37½"	660 x 959	314-16-1-18R or L
	2	18"	457	78	35.4	26" x 54"	660 x 1372	314-16-1-18
	1	24"	610	65	29.5	26" x 43½"	660 x 1111	314-16-1-24R or L
	2	24"	610	90	40.8	26" x 66"	660 x 1676	314-16-1-24
	1	30"	762	70	31.8	26" x 49½"	660 x 1264	314-16-1-30R or L
	2	30"	762	100	45.4	26" x 78"	660 x 1981	314-16-1-30
	1	36"	914	75	34.0	26" x 55½"	660 x 1410	314-16-1-36R or L
	2	36"	914	110	49.9	26" x 90"	660 x 2286	314-16-1-36
19½" x 17½" (495 x 445mm)	0	n/a		43	19.5	27¾" x 22½"	705 x 552	314-17.5-1
	1	18"	457	62	28.1	27¾" x 39"	705 x 991	314-17.5-1-18R or L
	2	18"	457	81	36.7	27¾" x 55½"	705 x 1410	314-17.5-1-18
	1	24"	610	68	30.8	27¾" x 45"	705 x 1143	314-17.5-1-24R or L
	2	24"	610	93	42.2	27¾" x 67½"	705 x 1715	314-17.5-1-24
	1	30"	762	73	33.1	27¾" x 51"	705 x 1295	314-17.5-1-30R or L
	2	30"	762	103	46.3	27¾" x 79½"	705 x 2019	314-17.5-1-30
	1	36"	914	78	35.4	27¾" x 57"	705 x 1448	314-17.5-1-36R or L
	2	36"	914	113	51.3	27¾" x 91½"	705 x 2324	314-17.5-1-36
24" x 18" (610 x 457mm)	0	n/a		45	20.4	32¼" x 23"	819 x 584	314-18-1
	1	18"	457	64	29.0	32¼" x 39½"	819 x 1003	314-18-1-18R or L
	2	18"	457	83	37.6	32¼" x 56"	819 x 1422	314-18-1-18
	1	24"	610	70	31.8	32¼" x 45½"	819 x 1156	314-18-1-24R or L
	2	24"	610	95	43.1	32¼" x 68"	819 x 1727	314-18-1-24
	1	30"	762	75	34.0	32¼" x 51½"	819 x 1308	314-18-1-30R or L
	2	30"	762	105	47.6	32¼" x 80"	819 x 2032	314-18-1-30
	1	36"	914	80	36.3	32¼" x 57½"	819 x 1461	314-18-1-36R or L
	2	36"	914	115	52.2	32¼" x 92"	819 x 2337	314-18-1-36
22" x 22" (559 x 559mm)	0	n/a		55	24.9	29" x 27"	737 x 686	314-22-1
	1	18"	457	74	33.6	29" x 43½"	737 x 1105	314-22-1-18R or L
	2	18"	457	93	42.2	29" x 60"	737 x 1524	314-22-1-18
	1	24"	610	80	36.3	29" x 49½"	737 x 1257	314-22-1-24R or L
	2	24"	610	105	47.6	29" x 72"	737 x 1829	314-22-1-24
	1	30"	762	85	38.6	29" x 55½"	737 x 1410	314-22-1-30R or L
	2	30"	762	115	52.2	29" x 84"	737 x 2134	314-22-1-30
	1	36"	914	90	40.8	29" x 61½"	737 x 1562	314-22-1-36R or L
	2	36"	914	125	56.7	29" x 96"	737 x 2438	314-22-1-36
24" x 24" (610 x 610mm)	0	n/a		60	27.2	31" x 29"	787 x 737	314-24-1
	1	18"	457	79	35.8	31" x 45½"	787 x 1156	314-24-1-18R or L
	2	18"	457	98	44.5	31" x 62"	787 x 1575	314-24-1-18
	1	24"	610	85	38.6	31" x 51½"	787 x 1308	314-24-1-24R or L
	2	24"	610	110	49.9	31" x 74"	787 x 1880	314-24-1-24
	1	30"	762	90	40.8	31" x 57½"	787 x 1461	314-24-1-30R or L
	2	30"	762	120	54.4	31" x 86"	787 x 2184	314-24-1-30
	1	36"	914	95	43.1	31" x 63½"	787 x 1613	314-24-1-36R or L
	2	36"	914	130	59.0	31" x 98"	787 x 2489	314-24-1-36